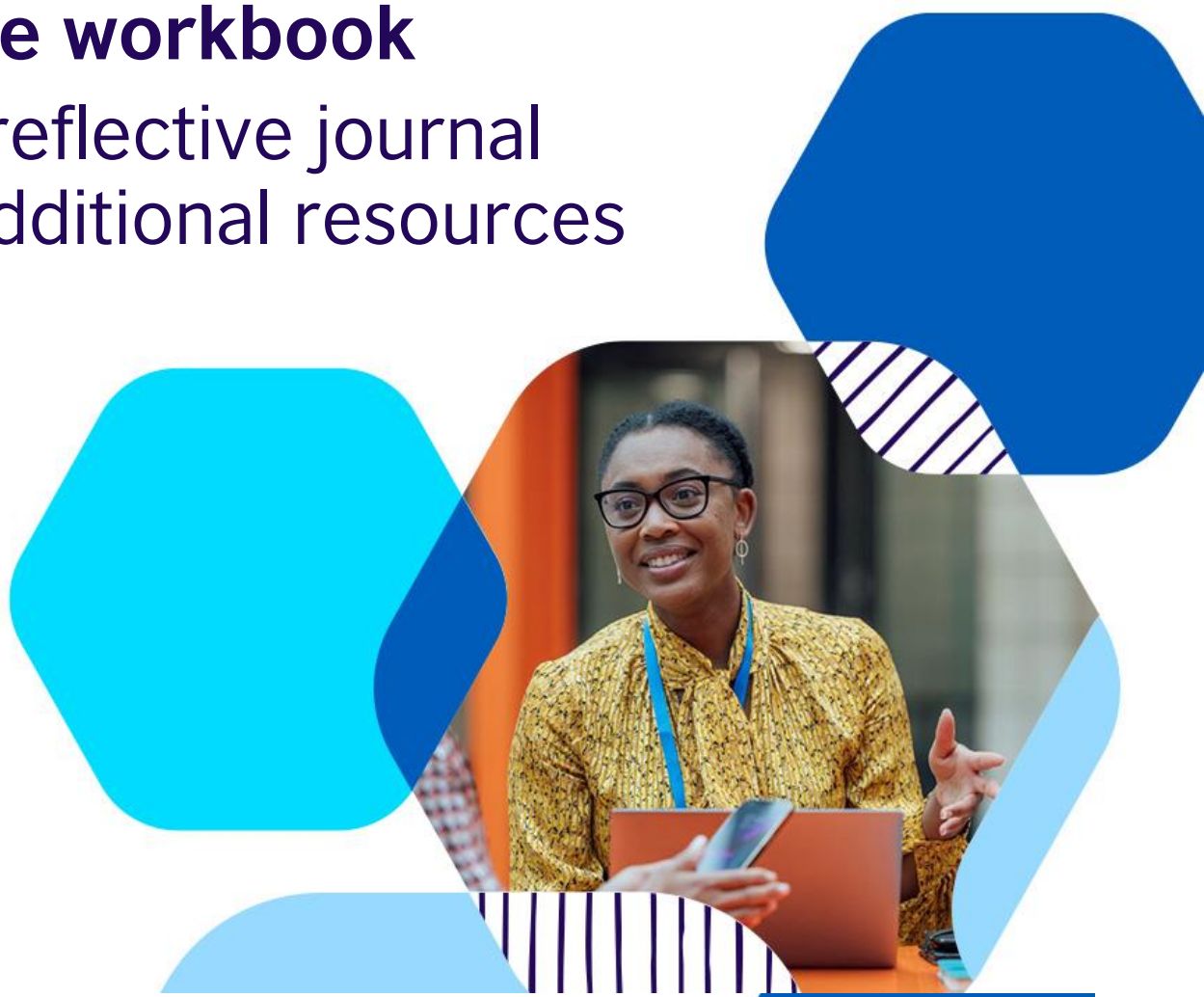


Teacher pathways: Understanding educational policies and practices

Theme workbook

Your reflective journal
and additional resources



Foreword

We're delighted you've chosen to continue your professional development with TeachingEnglish. We look forward to learning with you over the coming weeks as you work on the professional practice theme of [Understanding educational policies and practices](#).

In this workbook you'll find an overview of the theme, additional related learning materials, places to reflect and guidance in applying new ideas to your teaching practice.

You can use this workbook in different ways – keep handwritten notes, save and update it on your device, or print it. Do what works for you. We hope you find it beneficial.

The TeachingEnglish team.



Contents

Foreword.....	02
Understanding educational policies and practices.....	04
Self-assessment test.....	05
Your learning goals.....	07
Resources.....	08
Your learning – training courses.....	10
Your learning – webinars and live events.....	12
Your reflections and next steps.....	14



Understanding educational policies and practices

1. What does Understanding educational policies and practices involve?

Understanding educational policies and practices involves locating up-to-date and relevant information about national, regional and institutional educational policies and practices. It also includes employing professional and pedagogical practices that are consistent with applicable policies related to a number of different areas.

2. What areas are included?

The areas included in educational policies and practices are the goals of education, learner empowerment, educational reform, inclusive education, literacy, child protection, the curriculum, syllabus and methodologies, and teaching standards. This professional practice also involves reflecting on the impact of educational policies and practice on your decision making, professional behaviour and your learners' outcomes.

3. What are the most relevant educational policies and practices in your context?

The most relevant educational policies and practices in my context are...

4. Which educational policies and practices have the most impact on your learners? Why?

The educational policies and practices that have the most impact on my learners are....because...



Self-assessment test

How can you start developing your understanding and application of educational policies and practices in your context?

Reflecting on how aware you are of global, national or state educational policies and how they affect the choices you make in your classroom is an important starting point.

Use the self-assessment test below to evaluate your strengths and areas of development.

1. I adapt my curriculum in line with our learning context (e.g. language, culture, syllabus).



2. I recognise, minimise and report on safeguarding risks.



3. I use the sustainable development goals in my teaching.



4. I adapt my decision-making on language use in different lessons considering my learners' needs.



5. I develop learners' critical thinking skills to help them take responsibility for their learning and develop skills they need for future study or work.



6. I ensure all learners, including those with access challenges (physical impairments, specific educational needs, etc.), are able to learn.



Scoring

Add up the points for each question based on your selected answer:

One star: 1 point

Two stars: 2 points

Three stars: 3 points

Four stars: 4 points

Five stars: 5 points

My total is:

Interpretation

6 points	We think the teacher pathway will help you to develop your understanding of educational policies and practices. Try the quiz again after you've followed it to see your progress.
7-18 points	You have a good awareness of educational policies and practices. Follow the teacher pathway with us and join our TeachingEnglish activities in June and July 2024. Come back to the quiz to see what you've learnt.
19-24 points	You have a solid understanding of educational policies and practices in your context. Which section would you like more help in from the teacher pathway?
25-30 points	Educational policies and practices champion! You are already integrating this knowledge in your teaching. Share your knowledge and skills with other teachers in our TeachingEnglish community.



Your learning goals

Consider your strengths and areas of development in Understanding educational policies and practices. Refer to the self-assessment test to identify areas of development.

What are your strengths?

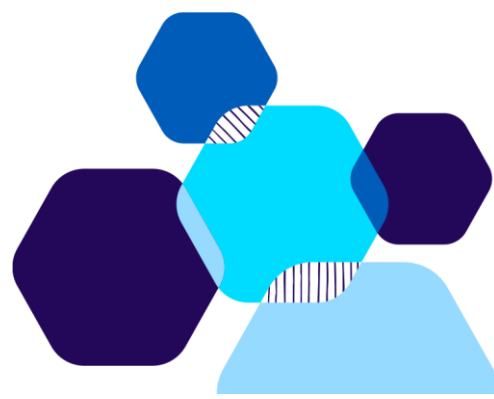
My strengths in Understanding educational policies and practices are...

What areas do you need to develop?

I need to develop...

How are you going to develop?

I am going to...

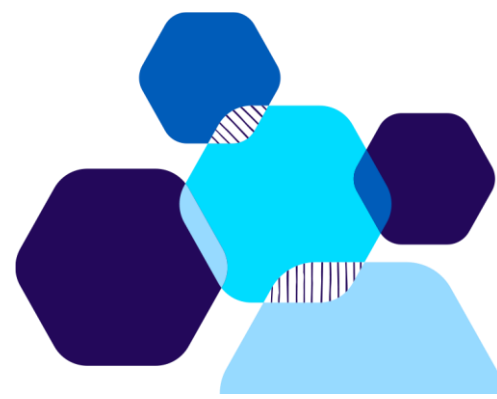


Resources

Below you will find a selection of resources to develop your understanding and application of Understanding educational policies and practices. Use the questions in the box to guide your learning and the check boxes to keep track of which resources you have used.

1. How can you adapt your curriculum in line with your learning context (e.g., language, culture, syllabus)?
2. How can you recognise, minimise and report on safeguarding risks?
3. How can you use the sustainable development goals in your teaching?
4. How can you adapt your decision-making on language use and policy in different lessons according to your learners' needs?
5. How can you develop your learners' critical thinking skills to help them take responsibility for their learning and develop skills they need for future study or work?
6. How can you ensure all learners, including those with access challenges (physical impairments, specific educational needs, etc.) are able to learn?

Type	Resource description (tap/click to open)	Used?
Use	Understanding educational policies and practices self-study booklet	<input type="checkbox"/>
Use	Equal opportunity and diversity: The handbook for teachers	<input type="checkbox"/>
Use	ACCESS to gender balance - a toolkit for teachers	<input type="checkbox"/>
Listen	How can I integrate global issues into my teaching?	<input type="checkbox"/>
Listen	How can I integrate the Sustainable Development Goals into my teaching?	<input type="checkbox"/>
Listen	How can the ELT sector become fairer for all teachers?	<input type="checkbox"/>
Listen	Education in focus 3: Inclusive education	<input type="checkbox"/>
Listen	The Climate Connection episode 2: Speaking youth - to power	<input type="checkbox"/>



Read	Teacher agency and identity through the Tree of Life approach	<input type="checkbox"/>
Read	How do I make sure sustainability is part of school life?	<input type="checkbox"/>
Read	How can my learners and I stay safe online?	<input type="checkbox"/>
Read	Language issues in migration and integration	<input type="checkbox"/>
Read	EMI in low- and middle-income countries	<input type="checkbox"/>
Read	Perceptions and strategies of learning in English by Singapore primary school children with dyslexia	<input type="checkbox"/>
Watch	Four webinars about multilingualism	<input type="checkbox"/>
Watch	Addressing human trafficking and modern slavery in the classroom	<input type="checkbox"/>
Watch	Oxymoronic: Can you even attempt to decolonize English teaching?	<input type="checkbox"/>
Watch	Knowledge is power: access to education for marginalised women	<input type="checkbox"/>
Watch	Developing a whole school approach to Special Educational Needs	<input type="checkbox"/>
Watch	Teaching resources on human trafficking and modern-day slavery	<input type="checkbox"/>
Watch	How to build anti-racism into teaching English publications	<input type="checkbox"/>
Watch	Three talks about critical thinking skills	<input type="checkbox"/>

What did you learn from the resources above?

I learnt....

What will you change in your teaching?

I am now going to....



Your learning – training courses

Visit the [training pages](#) on TeachingEnglish to see what courses are running in June and July 2024.

Plan

Decide which training course(s) you will do and how could help your knowledge and/or understanding of Understanding educational policies and practices.

Which training course(s) will you do?

How will the training course(s) help you develop your understanding and application of Understanding educational policies and practices?

Reflect

After doing the course(s), reflect on which ideas or strategies you learnt and how these will help your learners.

What new teaching ideas or strategies are you going to try?



How will the teaching ideas or strategies help your learners?

Revisit

After trying the new teaching ideas or strategies, reflect on how your learners responded to them and what you are going to do next.

How did your learners respond to the new ideas or strategies?

What are you going to do next?

Share what you learnt with the TeachingEnglish community in the comments section on TeachingEnglish or in the Facebook [Courses for teachers community](#).



Your learning – webinars and live events

Find out what webinar and other live events are happening connected to the theme of Understanding educational policies and practices on the [webinar page](#) on TeachingEnglish or on our [Facebook page](#).

Plan

Decide which event(s) you will attend and how it will help your knowledge and/or understanding of Understanding educational policies and practices.

Which event(s) will you attend?

How will the event(s) help you develop your understanding and application of Understanding educational policies and practices?

Reflect

After attending the event(s), reflect on which ideas or strategies you learnt and how these will help your learners.

What new teaching ideas or strategies are you going to try?



How will the teaching ideas or strategies help your learners?

Revisit

After trying the new teaching ideas or strategies, reflect on how your learners responded to them and what you are going to do next.

How did your learners respond to the new ideas or strategies?

What are you going to do next?

Share what you learnt with the TeachingEnglish community in the comments section on TeachingEnglish or on the [Facebook page](#).



Your reflections and next steps

Consider how developing your understanding of educational policies and practices has changed over the last few weeks. Read back on your notes and reflect on what you have learnt from attending different training courses and events and accessing different resources. What will you do differently with your learners now?

Developing my understanding of educational policies and practices has helped my learners by...

I've tried...in my lessons

I'm going to continue doing...in my lessons because

I want to continue working on...because



Well done — you’ve developed the professional practice of Understanding educational policies and practices. We hope you’ve found this teacher pathway workbook useful. Continue your learning with us by exploring other resources, joining another teacher training course and attending more webinars and live events.

Explore our [framework for teacher knowledge and skills](#) for inspiration, support and resources.

Learn more about other free teacher training courses with TeachingEnglish on our [training pages](#).

Register for more of our [webinars](#).

Keep up to date with other live events by following us on [Facebook](#).

